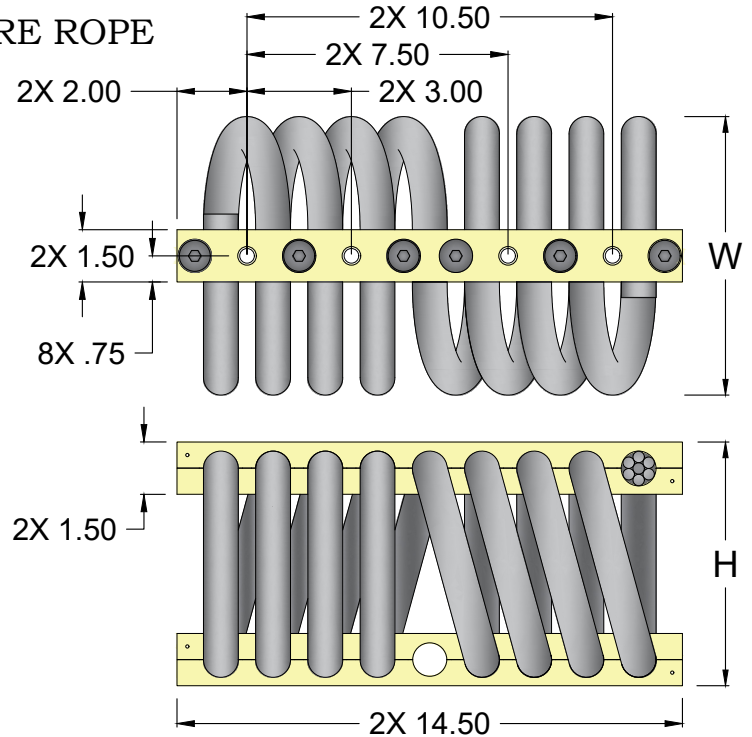
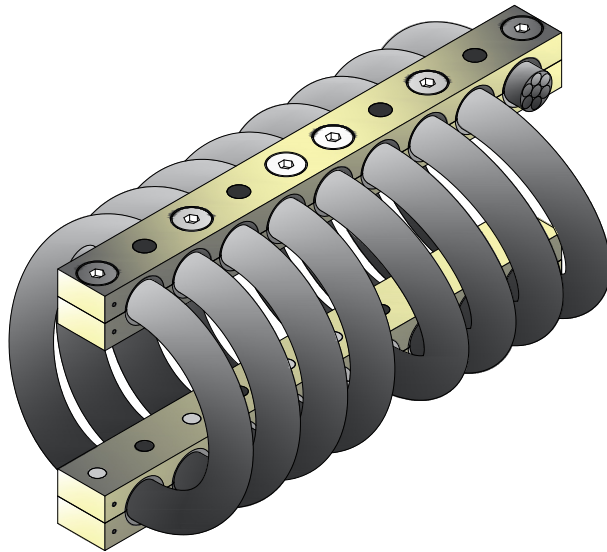


# CB1800 SERIES

1" WIRE ROPE



## NOTES

1. ALL DIMENSIONS ARE IN INCHES. INTERPRET PER ANSI Y14
2. ALL DIMENSIONS ARE NOMINAL AND FOR REFERENCE ONLY

ISOLATOR PART NO.	NOMINAL H (in)	NOMINAL W (in)	LOAD MODE	SHOCK AVERAGE K (lb/in)	VIBRATION AVERAGE K (lb/in)	MAX. RATED DYNAMIC TRAVEL (lb/in)
CB1800-15-[ ]	5.25	5.50	COMPRESSION	12100	32000	2.00
			SHEAR/ROLL	6220	6000	2.00
			45 DEG. C/R	7190	22800	2.40
CB1800-17-[ ]	6.00	6.50	COMPRESSION	9300	22400	2.40
			SHEAR/ROLL	4470	4280	2.40
			45 DEG. C/R	5020	1400	3.20
CB1800-20-[ ]	6.25	7.00	COMPRESSION	5910	13600	2.80
			SHEAR/ROLL	2840	2480	2.80
			45 DEG. C/R	3250	8800	3.60
CB1800-25-[ ]	7.00	8.00	COMPRESSION	4200	10000	3.20
			SHEAR/ROLL	2000	1800	3.20
			45 DEG. C/R	2400	6800	4.20
CB1800-30-[ ]	7.50	8.25	COMPRESSION	3080	7600	3.60
			SHEAR/ROLL	1440	1300	3.60
			45 DEG. C/R	1820	5200	4.80
CB1800-40-[ ]	8.50	9.25	COMPRESSION	2050	5840	4.00
			SHEAR/ROLL	870	960	4.00
			45 DEG. C/R	1080	3040	6.40
CB1800-50-[ ]	9.50	10.25	COMPRESSION	1020	4080	5.00
			SHEAR/ROLL	550	600	5.00
			45 DEG. C/R	650	2000	7.40



JOB NAME:

CUSTOMER :

CUSTOMER P.O.:

SALES ORDER:

## MODEL CB1800 SERIES WIRE ROPE ISOLATOR



**VMC GROUP**  
CONTROLLED ENVIRONMENT SOLUTIONS™

Bloomington, NJ Houston, TX Corona, CA Wind Gap, PA

DRAWING NO.:

REVISION:

SHEET:

SCALE :

1 OF 2

NONE

CB [ ] 1800 [ ] - 30 [ ] - T2

— MOUNTING HOLE OPTIONS

# OF COILS (BLANK = 8 COILS)

FAMILY SERIES SIZE (-15 THRU -50)

SPECIAL REQUIREMENTS (D\*, R, F, J\*\*)

— FAMILY SERIES

WIRE ROPE REQUIREMENTS

BLANK = 302 STAINLESS STEEL (STANDARD), OR G, OR S

# OF COILS (PATTERN OR PROFILE TO MATCH)

FAMILY NAME

**SPECIAL REQUIREMENTS**

<b>D</b>	DFARS*
<b>F</b>	THREAD FREE CABLE
<b>G</b>	GALVANIZED CABLE
<b>J</b>	ALT STYLE CONSTRUCTION**
<b>M</b>	METRIC INSERTS
<b>R</b>	RoHS
<b>S</b>	STAINLESS STEEL TOTAL

\* DFARS COMPLIANT RAW MATERIAL COMES FROM A LIMITED GROUP OF APPROVED SUPPLIERS AND IS NOT REQUIRED ON STANDARD PARTS.

\*\* SUBJECT TO MANUFACTURER'S DISCRETION. CONTACT VMC FOR APPLICABILITY.

**FEATURES & BENEFITS:**

- WIDE RANGE OF AVAILABLE SIZES PERMITS ATTACHMENT TO ALMOST ANY MACHINERY OR ENCLOSURE REGARDLESS OF WEIGHT.
- COMPACT, LOW-PROFILE DESIGN AND THE ABILITY TO ATTENUATE HEAVY SHOCK LOADS WITH MINIMUM DEFLECTION ALLOWS USE WHERE SPACE IS AT A PREMIUM.
- THREE-PLANE, ALL-AXIS ISOLATION MEANS THAT EQUIPMENT IS FREE TO MOVE IN ANY DIRECTION - VERTICALLY, HORIZONTALLY, AND Laterally.
- CUSTOM WINDING, LOOP COUNT AND MOUNTING FEATURES ARE AVAILABLE TO MEET SPECIFIC REQUIREMENTS.
- OPERATING TEMPERATURE RANGE -400F TO +700F.

**STANDARD MATERIALS / FINISHES:**

- **WIRE ROPE MATERIALS:** SERIES 302 STAINLESS STEEL.
- **BAR MATERIALS:** ALUMINUM ALLOY 6061-T6, -T6510, OR -T6511 PER SAE AMS4113, SAE AMS4150, OR ASTM B221 WITH CHEMICAL CONVERSION COATING PER MIL-DTL-5541, CLASS 1A.

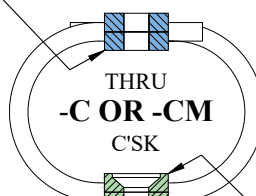
**SPECIAL OPTIONS:**

- **WIRE ROPE MATERIALS:** GALVANIZED, IMPROVED PLOW WIRE, PLASTIC FILLED VALLEY WIRE, INCONEL 600, STAINLESS STEEL TYPE 316, STAINLESS STEEL TYPE 305.
- **BAR MATERIALS:** STAINLESS STEEL, CRES TYPE 302, 303, 304, OR 304L WITH FINISH PASSIVATED PER QQ-P-35C TYPE II.
- **MOUNTING CONFIGURATIONS:** INSERTS, THREAD TYPES, CLEARANCE HOLES.
- CONTACT VMC FOR OTHER MATERIAL AVAILABILITIES.

**MOUNTING HOLE OPTIONS:****M = METRIC**

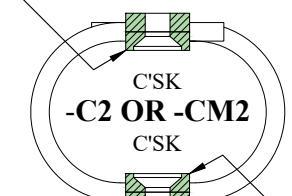
M C'SK = Ø.535 X 90° M THREAD = M12 X 1.75

4X Ø.535 THRU HOLE



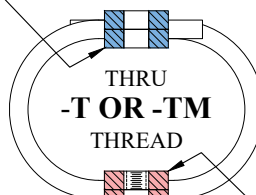
4X Ø.535 X C'SK 82°

4X Ø.535 X C'SK 82°



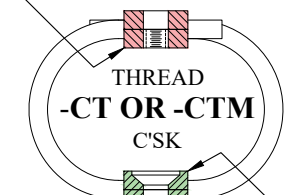
4X Ø.535 X C'SK 82°

4X Ø.535 THRU HOLE



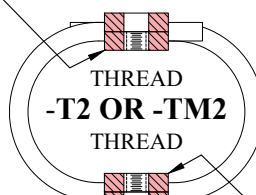
4X THREAD 1/2 - 13

4X THREAD 1/2 - 13



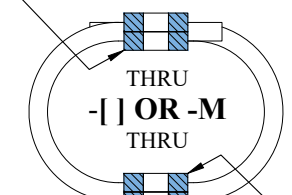
4X Ø.535 X C'SK 82°

4X THREAD 1/2 - 13



4X THREAD 1/2 - 13

4X Ø.535 THRU HOLE



4X Ø.535 THRU HOLE



JOB NAME:

CUSTOMER :

CUSTOMER P.O.:

SALES ORDER:

MODEL CB1800 SERIES  
WIRE ROPE ISOLATOR



**VMC GROUP**  
CONTROLLED ENVIRONMENT SOLUTIONS™

Bloomington, NJ Houston, TX Corona, CA Wind Gap, PA

DRAWING NO.:

REVISION:

SHEET:

SCALE :

2 OF 2

NONE